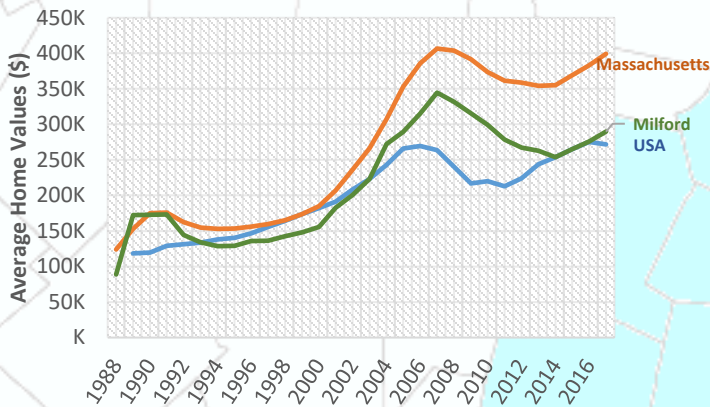


### Rising Home Values



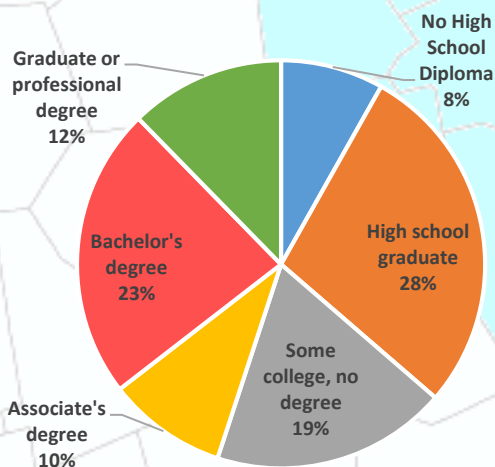
Beyond the year to year averages, in February 2017, the median single family home in Milford sold for \$286,950<sup>1</sup>. This is higher than the national median for February which was \$228,200<sup>2</sup>.

### Payroll



From Q2 2015 to Q2 2016, the payroll for all places of employment in Milford was \$1,078,461,718.<sup>3</sup>

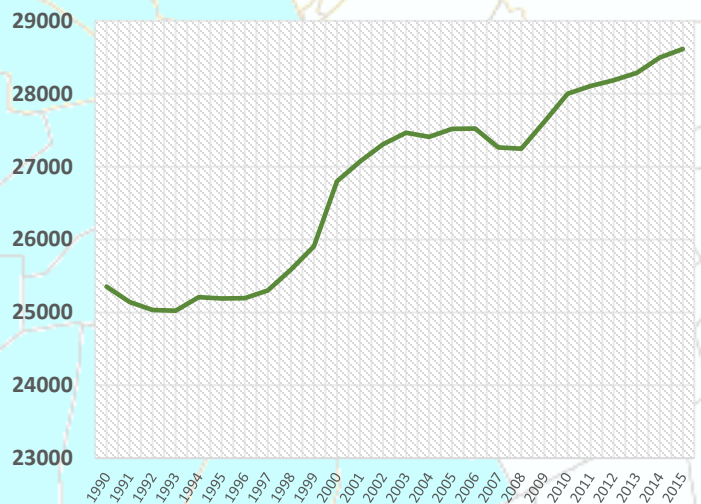
### Highly Educated



2011-2015 ACS (U.S. Census Bureau)

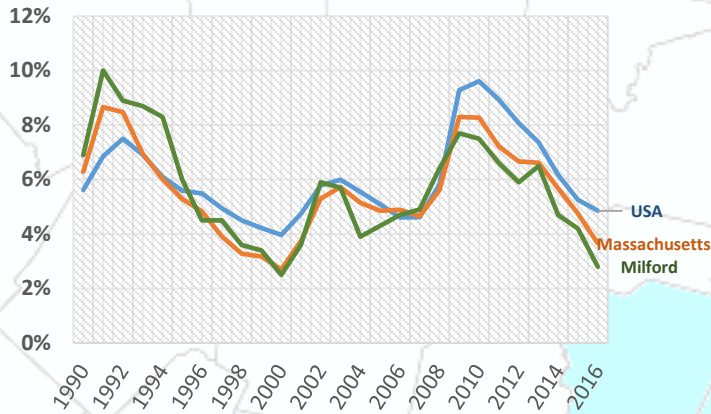
Milford has a highly educated population compared to the nation with 35% of residents having a bachelor's degree or higher. During the same time 29.8% of all people in the U.S. had at least a bachelor's degree.<sup>4</sup>

### Growing Population

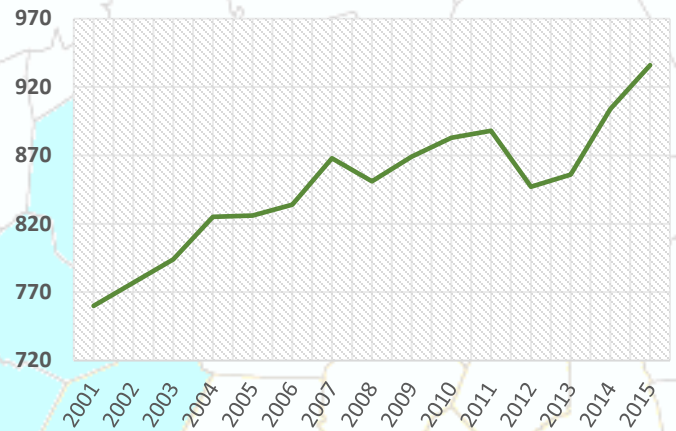


The population of Milford has been increasing steadily. In 2000, the population of Milford was 26,799 this increased to 27,999 by 2010, and in 2015, the population of Milford was estimated to be approximately 28,614.<sup>5</sup>

## Unemployment



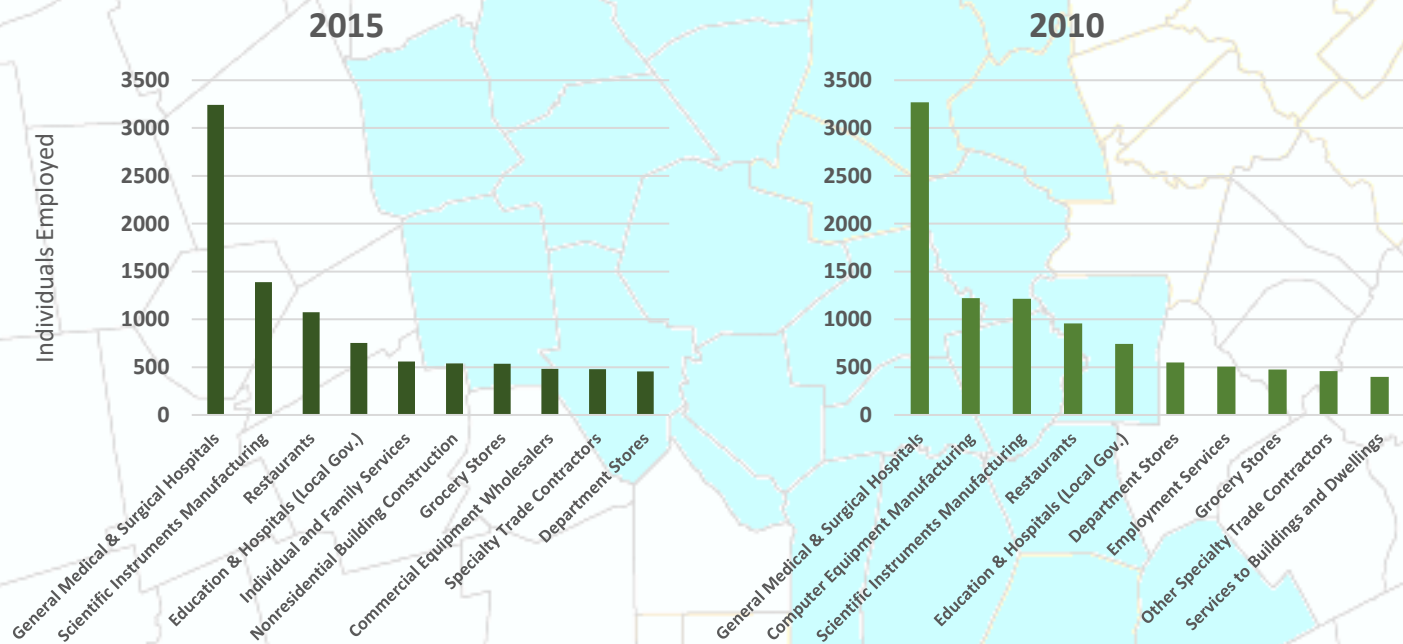
## Expanding Employers



Beyond the year to year averages, in February 2017, the unemployment rate in Milford was 4.5%. This is lower than the national unemployment rate of 4.8%<sup>3</sup>

The number of employers in Milford has been increasing at a steady rate. In 2001, there were 760 employers in the town, and by Q2 2016 this number had increased to 960.<sup>3</sup>

## Top Ten Industries In Milford



**Top Ten Industries data** and analysis conducted by the Public Policy Center at UMass Dartmouth for the 495/MetroWest Partnership in support of the 495/MW Suburban Edge Community Commission utilizing 2014 US Census Bureau Local Employment Dynamics. For more information on these data sets please visit <http://lehd.ces.census.gov/>

### Sources:

- Mass.gov Municipal Databank <http://www.mass.gov/dor/local-officials/municipal-databank-and-local-aid-unit/databank-reports-new.html> (Line graph municipal data)  
 1. The Warren Group <http://www.twgstats.com/tssub/start.asp> 2. Ycharts Average US Home Values [https://ycharts.com/indicators/sales\\_price\\_of\\_existing\\_homes](https://ycharts.com/indicators/sales_price_of_existing_homes)  
 3. Mass.gov Labor and Workforce Development <http://www.mass.gov/lwd/economic-data/> 4. US Census Bureau <https://www.census.gov/> 5. UMass Donahue Institute <http://www.donahue.umassp.edu/news-events/institute-news/new-population-estimates-for-mass-released-interactive-map-available>